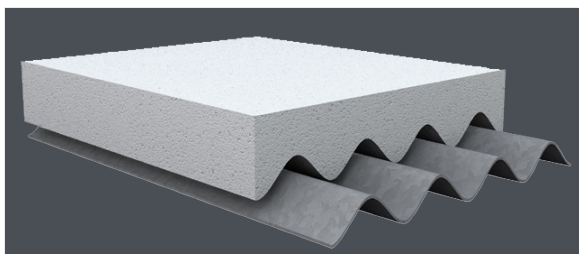


IZOLON

IZOFLUTE TYPE HR

EXPANDED POLYSTYRENE INSULATION FOR
METAL STRUCTURAL SHAPE



COMPLEMENTARY PRODUCTS



ADPHALT®
Adhesive



LEXCOR LEXGRIP
Screws and Plates

PHYSICAL PROPERTIES

HR (type 1) Expanded Polystyrene

Thermal Resistance (ASTM C518 C177) Thickness of 25 mm (1")	RSI-0.65 R-3.7
Vapour Permeability (ASTM E96) Thickness of 25 mm (1")	5.25 perm 300 ng/Pa·s·m²
Compressive Strength (ASTM D1621) Thickness of 38 mm (1 1/2")	80 kPa 11.64 lbs/in²
Flexural Strength (ASTM C518 C203) Thickness of 38 mm (1 1/2")	170 kPa 24.78 lbs/in²
Water Absorption (ASTM D2842) Thickness of 38 mm (1 1/2")	6%
Density (ASTM D1621)	16.01 kg/m³ 1 lbs/ft³
Limiting Oxygen Index (ULC S-701) % minimum	24%
Dimension Stability (ASTM D2126) % max. of linear change	1.5%

DESCRIPTION

Flat expanded polystyrene insulation, custom factory cut to perfectly match the shape of the metal structure.

CERTIFICATIONS



- Meets CAN/ULC S-107 Standard
- C7 and C12 under CAN/ULC S-126M Standard
- UL Standard 790 (ASTM E 108)
- UL Class A with most roofing membrane systems (See UL Directory of Roofing Systems and Materials)
- Meets the ASTM C 1338 standard, report R04-690 test methods to determine mold resistance.
- CSA 123.21

INSTALLATION

1. The installation of the panels is done independently.
2. Place the panels in close contact, without deformation or empty space, in the lowest parts of the grooves, as indicated in the shop drawing.
3. If adhered with adhesive, refer to the technical data sheet of the adhesive used for application recommendations.
4. If mechanically attached, use the appropriate LEXCOR LEXGRIP screws and plates. Follow FM recommendations for the number of mechanical fasteners to be used per panel.

ADVANTAGES

Match Perfectly the Deck Shape

Eliminates air spaces at the metal profile, increases thermal value, redistributes load and provides better system support.

Low Water Absorption

The closed cell walls are waterproof and as such, water can only penetrate in channels located between polystyrene cells that are held together.

High-Dimensional Stability

According to industry standards, EPS is one of the leaders in terms of size maintenance. This helps the system to remain fully waterproof at all times.

Continued on back

IZOFLUTE

TYPE HR

EXPANDED POLYSTYRENE INSULATION FOR METAL STRUCTURAL SHAPE

SIZES	
Width x Length*	609 mm x 1,219 mm 24" x 48"
Thickness	Varies according to metal profile
Number of Panels per Skid	Varies according to thickness

*Other sizes available on special order

Captive Gas; 98% Air and 2% Plastic

This formula has been used for more than 50 years. It does not contain any VOC, CFC's, HCFC's, Formaldehyde or any gas that can impact the ozone layer. Furthermore, this provides the product with premium features including its light weight and the maintenance of R-Value.

Environmentally Friendly

EPS is 100% recyclable and contains 10% recycled materials. Produced locally, the distance between the plant and site is often shorter than other products of the industry.

Mildewproofing

EPS contains materials that do not support the growth of bacteria such as spores and mushrooms.

Meets High Standards

Helps to reach Novoclimat (in Quebec if applicable), EnergyStar (Ontario and the Maritimes) and R-2000 (Canada) insulation levels.



PRODUCT WARRANTY

Thermal Value is 100% Guaranteed

The thermal resistance of the product is 100% guaranteed free of charge for a period of at least 40 years.

