

**RefleXor Membrane**

0 % VOC (g / l)

100 % recycled polyester fiber

Made in Canada

LEED Information.

Materials and Resources;

MR 3, MR 4, MR 5, MR 6.

Indoor Environmental Quality;  
IEQ 1, IEQ 2.

Energy & Atmosphere;

EA 1, EA 3.

Innovation & Design Process;

IDP 1.

For additional information ;  
Customer support : 1 800 561.4279  
Website : [www.mslfibre.com](http://www.mslfibre.com)

[infoplus@materiauxspecl.com](mailto:infoplus@materiauxspecl.com)

Developed and  
manufactured in  
**Canada**



# REFLEXOR

**RefleXor thermo-acoustic membrane**

Properties	Requirements	Nominal value
Emissivity	ASTM C-1371	0.02 (98 %)
Water vapour permeability	ASTM E-398	0.05 (g / 100 in <sup>2</sup> / 24h)
Drive in 100 % strain or less	Grab test	686 Psi
OTR - Oxygen transmission	ASTM D-3985	0.07 (cc / 100 ft <sup>2</sup> / 24hr)
Acoustic value	ASTM E 336-97 ASTM E 413-04	According to the installation parameters

**Physical properties**

Roll size:	48 in. x 60 ft (1.27 m x 18.29 m)
Sq Feet per roll:	200 ft <sup>2</sup> (18.58 m <sup>2</sup> )
Membrane thickness:	0.0666 in. (1.70 mm)
Number of rolls / skid:	39 rolls

**Ecological properties**

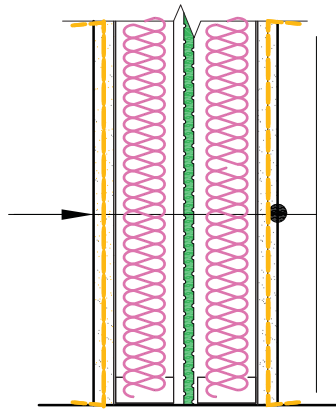
- 0 % - COV (g / l.) - Volatile organic compounds
- 100% recycled polyester fiber

## RefleXor Benefits

- Vapour barrier
- Odour barrier
- Reflective insulating material
- Thermal barrier
- Acoustic barrier
- Air barrier
- Mold resistant
- Sound absorption
- Reduces the resonance transfer between two drywall boards

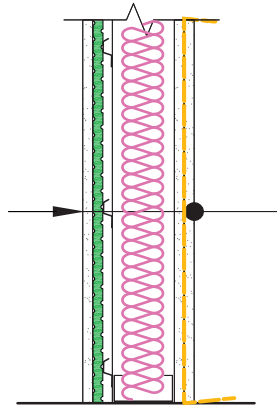
# REFLEXOR

## Partition wall FSTC $\geq 66$



- 5/8" type X drywall
- RefleXor thermo-acoustic membrane
- 5/8" type X drywall
- 3 5/8" metal studs or 2" x 4" wood studs screwed at 16" o.c. with insulation wool batts
- 1/2" min. air space (variable)
- SONOpan II
- 3 5/8" metal studs or 2" x 4" wood studs screwed at 16" o.c. with insulation wool batts
- 5/8" type X drywall
- RefleXor thermo-acoustic membrane
- 5/8" type X drywall

## Condo to corridor wall FSTC $\geq 58$



- 5/8" type X drywall
- SONOpan
- Resilient channels
- 3 5/8" metal studs or 2" x 4" wood studs screwed at 16" o.c. with insulation wool batts
- 5/8" type X drywall
- RefleXor thermo-acoustic membrane
- 5/8" type X drywall

For additional information ;  
Customer support : 1 800 561.4279  
Website : [www.mslfibre.com](http://www.mslfibre.com)

[infoplus@materiauxspecl.com](mailto:infoplus@materiauxspecl.com)

Developed and  
manufactured in  
**Canada**

