

## DESCRIPTION & USE

- Used to regulate the flow of water from the roof where storm water flow rates are restricted by municipal regulation
- Inserts are placed inside the strainer clamping ring, which holds them in position

## FEATURES & BENEFITS

- Calibration Capability - one can adjust the allowable flow of water

## TECHNICAL DATA

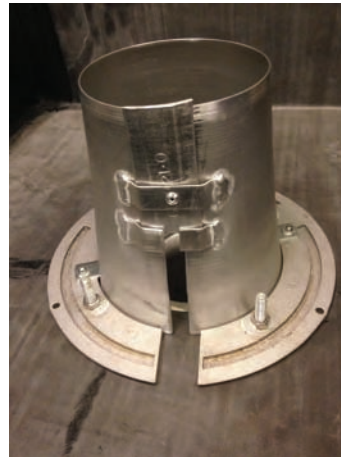
### Flow Control Calculation

1. Determine the maximum rainfall per hour
2. Calculate the number of roof drains required for the subject roof area, consistent with local by-laws.
3. Confirm with engineer that the structure can withstand the increased load that will occur when the roof is used as a rainfall reservoir. The Flash-Tite Flow Control is calibrated using a head of water of 6".
4. Determine the allowable flow per drain in gallons per minute (+/- 0.5gpm) and note on the drawings.
5. Specify the flow control insert and number of gpm.

## SPECIFICATION

Flow Control Inserts should be included with a Flash-Tite™ Drain specification by simply specifying that the Flash-Tite™ Drain be equipped with Flow Control Inserts, being sure to specify the number of gpm. For a more detailed specification, add the following example paragraph: Flash-Tite™ Drains shall be equipped with Flash-Tite™ Flow Control Inserts calibrated to [20gpm].

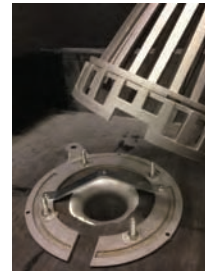
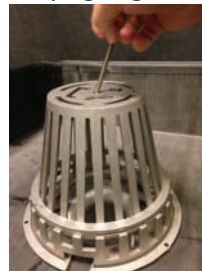
**NOTE:** Flash-Tite™ Flow Control Inserts are normally shipped preset but can be modified on site by removing the rivet. Once this is removed the calibration stamp is no longer valid.



## INSTALLATION INSTRUCTIONS

### Step 1

Remove the fastening bolt from the Flash-Tite Superdrain strainer and remove the strainer from the clamping ring.



### Step 2

Place the Flow Control unit over the fastening bracket making sure the unit is inside the clamping ring touching the membrane.



Using both hands give the Flow Control a squeeze so that it snaps into the innercircle of the clamping ring and push down.

continued on back

Visit our video channels: <https://vimeo.com/channels/lexcoren>

## COMMERCIAL BUILDING PRODUCTS

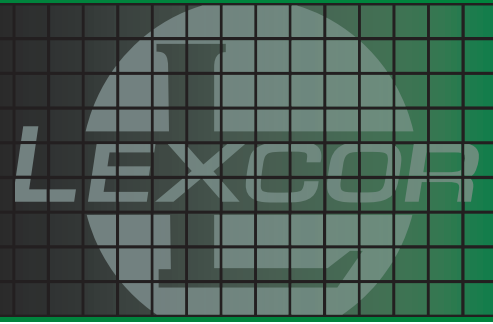
Ontario & Western Canada  
1.800.268.2889



Quebec & Eastern Canada  
1.800.363.2307

# FLASH-TITE

## Superdrain Flow Control Insert



The Flow Control unit should be flush on top of the membrane.

### Step 3

The Flow Control insert has been calibrated for a specific flow and this step is important so that this value is not compromised.

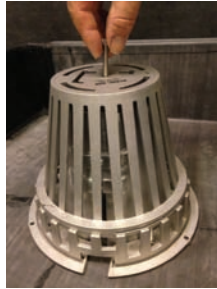


Apply Lexcan Water Cut Off Mastic or a compatible membrane caulking to fill the gap where the fastening bracket meets the Flow Control unit.



### Step 4

Replace the Flash-Tite Superdrain Strainer.



The Flash-Tite Superdrain with Flow Control insert is now ready for use.



#### COMMERCIAL BUILDING PRODUCTS

Ontario & Western Canada  
1.800.268.2889



Quebec & Eastern Canada  
1.800.363.2307