

FIXED ACCESS LADDERS

DESCRIPTION & USE

- LEXCOR fixed access ladders are designed and constructed with safety in mind
- Building code compliant
- Engineered to support required loads
- Custom fabricated to field measurements
- Provide easy access to roofs, mezzanines, loading docks or wherever a fixed access ladder is required

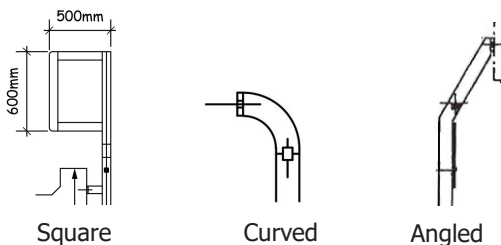
TECHNICAL DATA

- LexcOR Fixed Access Ladders can be constructed in aluminum, steel or stainless steel.

Steel Finishing Options:

- Painted
- Hot-dip galvanized
- Both painted and hot-dip galvanized

Top End Profiles



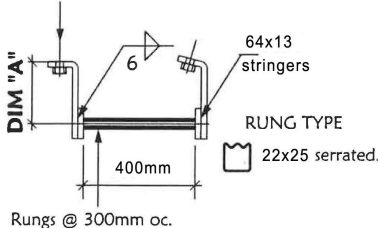
Parts of a Fixed Access Ladder:

- Rungs - different rung types are offered for aluminum and steel/stainless steel ladders (see details below)
- Side Rails - flat bar constructed to custom length
- Brackets - to secure ladder to substrate
- Safety Cages - for increased safety and security (required when top of ladder is 5m above grade, floor or landing)
- Landing Platforms - required at specific elevations where worker activity is anticipated.

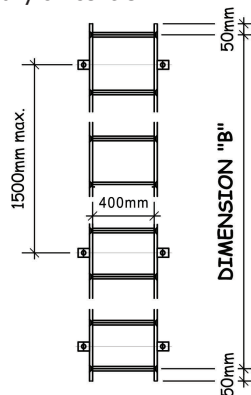
ALUMINUM FIXED ACCESS LADDER

All aluminum 6061-T6, mill finish. If aluminum is in contact with concrete, contacts are painted with 2 coats of bitumastic. Hardware: stainless steel type 316. Design load: 160 kg on rungs, applied vertically on centre.

FB50x13 bent brackets c/w 13dia x 100 lg Hilti Kwik bolt. Turned out on flat walls & in on curved walls (see profile).



TYPICAL PLAN.



TYPICAL LADDER.

Please specify the following:

DIM. "A": _____

DIM. "B": _____

No. of Rungs: _____

Top End Profile Type: _____

Wall Profile (Flat or Curved): _____

continued on back

Visit our video channels: <https://vimeo.com/channels/lexcoren>

COMMERCIAL BUILDING PRODUCTS

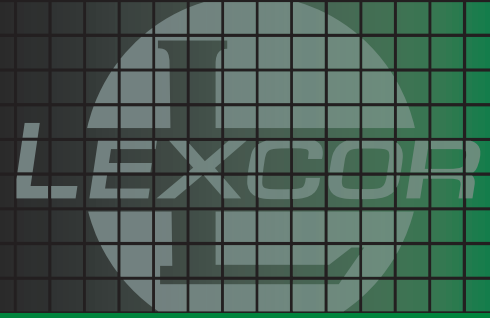
Ontario & Western Canada
1.800.268.2889



Quebec & Eastern Canada
1.800.363.2307

lexcor.net

FIXED ACCESS LADDERS



STEEL / STAINLESS STEEL FIXED ACCESS LADDER

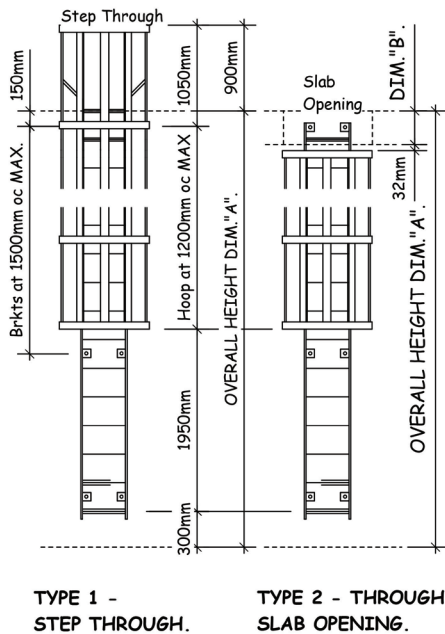
Steel: Painted or hot-dip galvanized or both after fabrication.

Hardware: A307 painted or galvanized

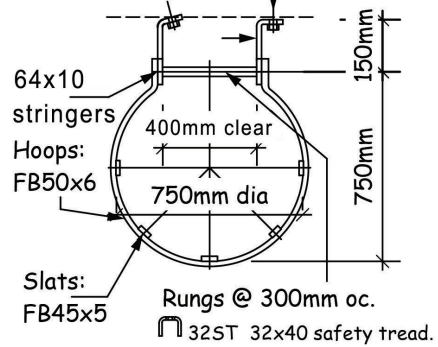
Stainless Steel: Type 316 mill finish

Hardware: Stainless steel type 316.

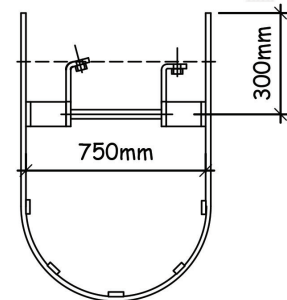
Design Load: 160 kg on rungs, applied vertically on centre.



FB50x10 bent brackets c/w
16dia x150 Hilti KB. Turn out on flat
walls, turn in on curved walls.



TYPICAL PLAN



PLAN AT STEP THROUGH.

Please specify the following:

DIM. "A": _____

DIM. "B": _____

No. of Rungs: _____

Top End Profile Type: _____

Wall Profile (Flat or Curved): _____

Finish (Paint / Hot-dip galv.): _____

COMMERCIAL BUILDING PRODUCTS

Ontario & Western Canada
1.800.268.2889



Quebec & Eastern Canada
1.800.363.2307