

DESCRIPTION & USE

LEXCAN HI-TUFF TPO UN-REINFORCED MEMBRANE is a thermoplastic polyolefin-based membrane for flashing details when the use of factory pre-molded flashings is not feasible.

LEXCAN HI-TUFF TPO UN-REINFORCED MEMBRANE is used:

- To create a watertight seal at all roofing penetrations and irregular roof details.
- To reinforce “T” intersections in field seams and seam transitions from horizontal to vertical.

FEATURES & BENEFITS

Reliable Weldability - allows for consistent and high-quality seams in penetrations and other areas of the roof that are critical.

TECHNICAL DATA

Typical Properties & Characteristics	
Material:	Non-reinforced TPO
Thickness:	1.5 mm (0.060")
Tear Resistance:	52.5 kN/m (300 lbs/in)
Weight per Unit:	1.25 kg/m ² (0.36 lbs/ft ²)
Available colours:	White, Grey and Tan

PACKAGING & COVERAGE

Roll Sizes:	61 cm x 15.24 m (24" x 50')	122 cm x 15.24 m (48" x 50')*
Coverage per Roll:	9.29 m ² (100 ft ²)	18.58 m ² (200 ft ²)
Weight per Roll:	16.3 kg (36 lbs)	32.7 kg (72 lbs)
Quantity per Box:	1 per box	1 per box *available only in white

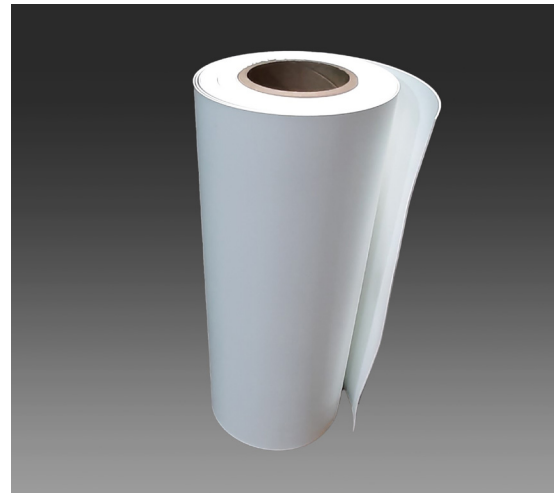
STORAGE

Store indoors, out of direct sunlight, and keep clean and dry prior to application.

INSTALLATION

Note: Prior to installation, ensure the welding surface is clean and dry. If required, use LEXCAN SINGLE PLY MEMBRANE CLEANER.

HI-TUFF TPO UN-REINFORCED MEMBRANE is used to flash various roofing penetrations. The specific method for flashing the detail is different for each situation. Consult the appropriate LEXCAN detail for installation.



CAUTIONS & LIMITATIONS

- Do not install HI-TUFF TPO UN-REINFORCED MEMBRANE in direct contact with asphalt.