

### DESCRIPTION AND USE

LEXCAN HI-FLEX EPDM T-610 OVERLAY TAPE is a black, semi-cured EPDM membrane laminated to an EPDM pressure sensitive tape. It is primarily designed to cover, protect, and seal seam overlays of HI-FLEX EPDM membranes. HI-FLEX EPDM T-610 OVERLAY TAPE may also be used to seal mechanical fastening bars, cover membrane fasteners, and seal the membrane/metal on a drip edge detail.

**CAUTION:** Proper EPDM field seam fabrication is a multi-step process using different materials. Refer to Lexcan's detailed specifications and drawings for complete seam fabrication instructions and requirements.

### FEATURES AND BENEFITS

**Quick and Easy to Install** - peel and stick application saves time and labour.

**Resistant to UV light, high heat, and moisture** - for long-term durability and performance.

### TECHNICAL DATA

Typical Properties and Characteristics	Test Method	Typical Values
<b>Colour (Cover and Tape):</b>	Visual	Black
<b>Base Polymer (Cover and Tape):</b>	FTIR	EPDM
<b>Tensile Strength:</b>	ASTM D 412 Die C	900 psi min.
<b>Elongation:</b>	ASTM D 412	300%
<b>Tear Resistance:</b>	ASTM D 624	125 lbs./in
<b>Ozone Resistance:</b>	ASTM D 4419	No Cracking
<b>Peel Strength on EPDM:</b>	ASTM D 413	10 pli @ 21°C (70°F)
<b>Shear Strength:</b>	ASTM D 816	20 psi @ 21°C (70°F)
<b>Brittleness Temperature:</b>	ASTM D 2137	-46°C (-50°F)

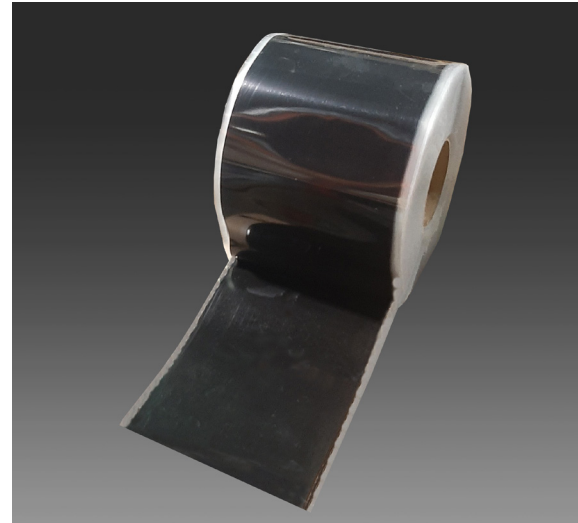
**Note:** The previously mentioned details are shared for informational purposes only. The properties and performance characteristics listed are average values and should not be construed as manufacturing standards.

### PACKAGING & COVERAGE

Sizes	Roll per Box
<b>152 mm x 30.48 (6" x 100')</b>	2
<b>229 mm x 30.48 m (9" x 100')</b>	1
<b>305 mm x 15.24 m (12" x 50')</b>	1

### STORAGE

Store material in original unopened packaging at temperatures between 4°C - 43°C (40°F-110°F).



### SHELF LIFE

24 months when stored as recommended.

### INSTALLATION

Ensure that the substrate is suitable for the application of HI-FLEX EPDM T-610 OVERLAY TAPE. Ensure the area to receive the tape is clean, dry, and free of dirt, dust, debris, oils, un-adhered coatings, deteriorated membrane, or other contaminants that may affect the performance of HI-FLEX EPDM T-610 OVERLAY TAPE. If necessary, clean the surface to receive the tape with LEXCAN SINGLE PLY MEMBRANE CLEANER.

HI-FLEX EPDM T-610 OVERLAY can be applied to clean and dry EPDM rubber or metal surfaces using LEXCAN PA-100 EPDM AND TPO PRIMER.

1. Apply LEXCAN PA-100 EPDM AND TPO PRIMER to the surfaces where the OVERLAY TAPE T-610 is to be applied, in strict accordance with their application directions. Let the surface completely dry before applying the OVERLAY TAPE.
2. Unroll the OVERLAY TAPE, peel off the release paper and neatly adhere the tape to the primed surfaces. If fabricating a seam, centre the OVERLAY TAPE over the seam, minimum of 63.5 mm (2-1/2") of OVERLAY TAPE should extend beyond any seam in all directions. If the detail requires, apply LEXCAN LAP SEALANT around the edges of the OVERLAY TAPE in accordance with the application directions of that product.

### CAUTIONS & LIMITATIONS

- Not for use on PVC membranes
- Do not use in detail flashing applications

### SINGLE PLY ROOFING SYSTEMS

Ontario & Western Canada 1.800.268.2889

Quebec & Atlantic Canada 1.800.363.2307