

PR PLUS

POLYESTER REINFORCEMENT

DESCRIPTION & USE

LEXCOR PR PLUS is a saturated and spun-bonded polyester reinforcement mat with starch-based binder, used in various roofing applications, providing exceptional strength and durability.

It can be used:

- With both hot and cold (liquid) applied bitumen coating systems.
- As base plies under hot-applied modified bitumen.
- As base flashing for details.
- In multi-ply built-up roofing.
- For roof restoration.
- For roof repairs.

FEATURE & BENEFITS

Easy application - simply unroll and embed into adhesive.

Strong - excellent tear and puncture resistance.

Mold resistant - will not absorb moisture or rot.

Porous - porosity allows good adhesion between membrane layers.

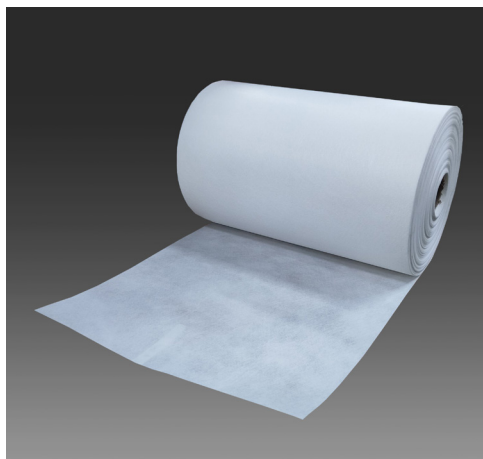
White colour - helps with assuring a good saturation.

TECHNICAL DATA

Typical Physical Properties			
Property	Unit of Mesure	Typical Value	Test Method
Thickness:	mm	1	
Weight:	g/m ² (osy)	110 (3.8)	ASTM D3776
Elongation: MD CD	% @ break	34 36	ASTM D5034
Breaking Force: MD CD	N (lbf)	734 (165) 618 (139)	ASTM D5034
Trap Tear Strength: MD CD	N (lbf)	160 (36) 147 (33)	ASTM D5733

PACKAGING

- 305 mm x 91.44 m (12" x 300')
- 457 mm x 91.44 m (18" x 300')



INSTALLATION

- In accordance with the manufacturer's recommendations, apply a coat of the hot or cold (liquid) applied bitumen adhesive on to the substrate.
- Embed reinforcement mat into adhesive immediately, using a brush or broom.
- Ensure the reinforcement mat lies flat without wrinkles, avoiding over-stretching, bridging or "fishmouths".
- Apply a final coat of the hot or cold (liquid) applied bitumen adhesive, in accordance with the manufacturer's recommendations, ensuring the reinforcing mat is not visible.

CAUTIONS & LIMITATIONS

- When using LEXCOR PR PLUS with asphaltic materials, do not expose asphaltic materials to the elements (water, solvents, oils or other contaminants that may be harmful).
- Store rolls upright.
- Store material in a dry place.



COMMERCIAL BUILDING PRODUCTS

Ontario & Western Canada 1.800.268.2889 / Quebec & Atlantic 1.800.363.2307

Distr. By/Par Lexsuco 2010 Corporation, 3275 Orlando Drive, Mississauga, ON, L4V 1C5

All products manufactured and/or distributed by Lexsuco 2010 Corporation comply with the description and properties specified in the technical data sheet in effect at the date of manufacture and/or publication. Lexsuco 2010 Corporation may change the composition and/or usage of its products without prior notice.