

### DESCRIPTION & USE

LEXCAN HI-TUFF TPO PREFAB SCUPPER is a prefabricated TPO through-wall scupper. It is used in conjunction with HI-TUFF TPO Membranes to ensure effective water drainage for the prevention of water damage, allowing water to flow from the roof through the wall.

### FEATURES & BENEFITS

**Prefabricated Membrane Accessory** - provides substantial labour savings compared to field fabrication.

**Easy to Install** - no on-site assembly; simply insert, fasten, weld and seal.

**Aesthetically Pleasing** - consistent and professional look.

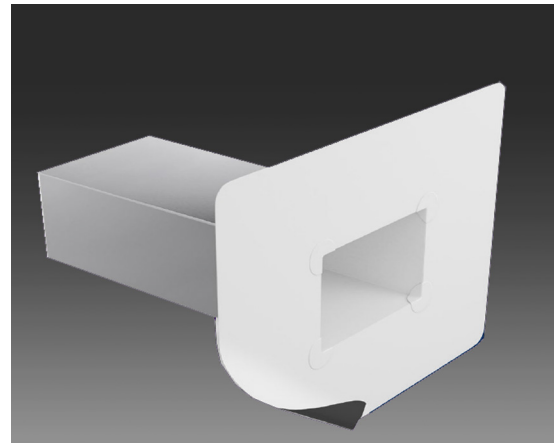
### TECHNICAL DATA

Typical Properties & Characteristics	
Membrane Material:	HI-TUFF TPO membrane
Available Standard Colours:	White, Grey and Tan
Available Membrane Flashing Sizes:	457.2 mm x 457.2 mm (18" x 18") 457.2 mm x 533.4 mm (18" x 21") 457.2 mm x 609.6 mm (18" x 24")
Available Scupper Depths:	304.8 mm (12") and 508 mm (20")
Available Scupper Sizes:	152.4 mm x 152.4 mm (6" x 6") 152.4 mm x 228.6 mm (6" x 9") 152.4 mm x 304.8 mm (6" x 12")

Note: Custom sizes available upon request.

### PACKAGING

Quantity per Box:	1 unit
-------------------	--------



### INSTALLATION

**Note:** Prior to installation, ensure the welding surface is clean by using a LEXCAN SINGLE PLY MEMBRANE CLEANER.

1. Cut an appropriate sized hole, in the field/wall membrane, where the scupper is to be installed.
2. Position the scupper by inserting it into the hole/opening of the perimeter wall.
3. Secure the scupper's metal flange by lifting the membrane flashing and fastening it to deck and wall.
4. Heat weld the scupper's membrane flashing to the field/wall membrane.
5. Apply Edge Sealant around edge of the membrane flashing.